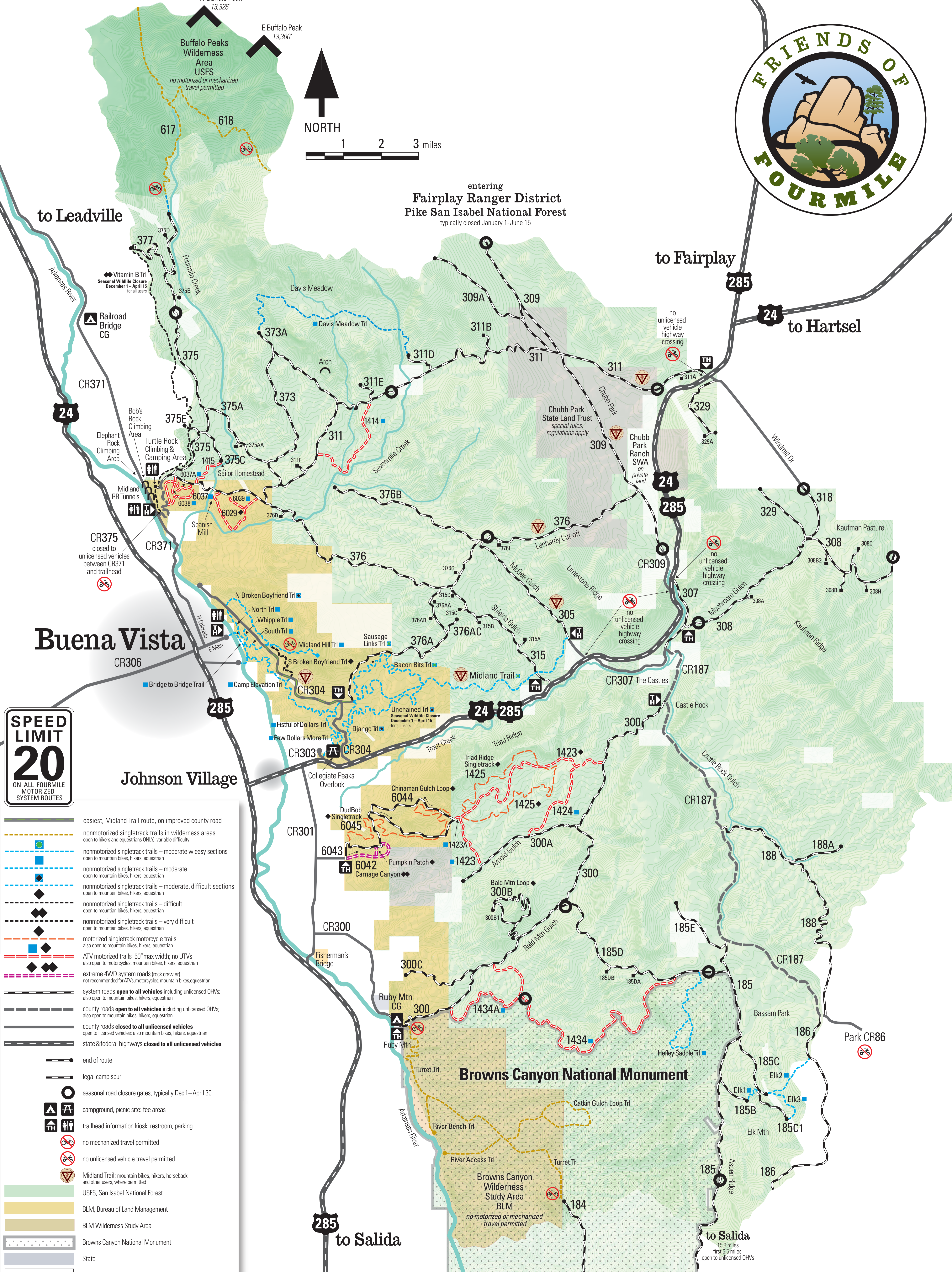




entering
Fairplay Ranger District
Pike San Isabel National Forest
typically closed January 1-June 15



SPEED LIMIT 20
ON ALL FOURMILE
MOTORIZED
SYSTEM ROUTES

- easiest, Midland Trail route, on improved county road
- - - nonmotorized singletrack trails in wilderness areas open to hikers and equestrians ONLY; variable difficulty
- - - nonmotorized singletrack trails - moderate w easy sections open to mountain bikes, hikers, equestrian
- - - nonmotorized singletrack trails - moderate open to mountain bikes, hikers, equestrian
- - - nonmotorized singletrack trails - moderate, difficult sections open to mountain bikes, hikers, equestrian
- - - nonmotorized singletrack trails - difficult open to mountain bikes, hikers, equestrian
- - - nonmotorized singletrack trails - very difficult open to mountain bikes, hikers, equestrian
- - - motorized singletrack motorcycle trails also open to mountain bikes, hikers, equestrian
- - - ATV motorized trails 50" max width; no UTVs also open to motorcycles, mountain bikes, hikers, equestrian
- - - extreme 4WD system roads (rock crawler) not recommended for ATVs, motorcycles, mountain bikes, equestrian
- - - system roads open to all vehicles including unlicensed OHVs; also open to mountain bikes, hikers, equestrian
- - - county roads open to all vehicles including unlicensed OHVs; also open to mountain bikes, hikers, equestrian
- - - county roads closed to all unlicensed vehicles open to licensed vehicles; also mountain bikes, hikers, equestrian
- - - state & federal highways closed to all unlicensed vehicles
- end of route
- legal camp spur
- seasonal road closure gates, typically Dec 1-April 30
- ▲ campground, picnic site; fee areas
- TH trailhead information kiosk, restroom, parking
- ⊘ no mechanized travel permitted
- ⊘ no unlicensed vehicle travel permitted
- ▽ Midland Trail: mountain bikes, hikers, horseback and other users, where permitted
- USFS, San Isabel National Forest
- BLM, Bureau of Land Management
- BLM Wilderness Study Area
- Browns Canyon National Monument
- State
- Private